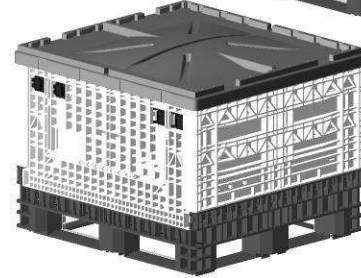


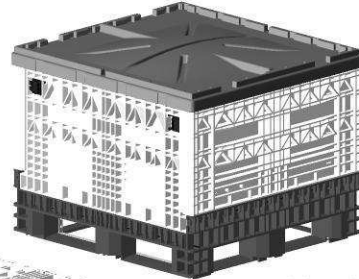
STANDARD COLLAPSIBLE BIN (48"X45"X34") WITH ONE OPEN DROP DOOR
EXTERNAL DIMS:1140X1220X865

BIN
MATERIAL BASE : BLACK PP
MATERIAL PANELS : GREY HDPE
MATERIAL LID : BLACK HDPE
BIN MASS : 70KG
LID MASS : 11.5KG

DROP DOOR
SIZE : 775x 420

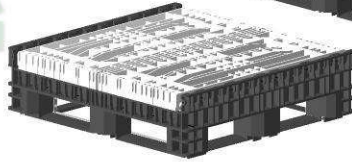


STANDARD COLLAPSIBLE BIN (48"X45"X34")

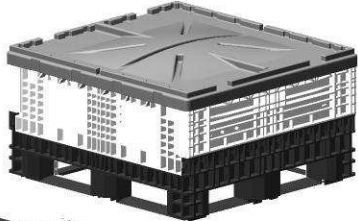


STANDARD COLLAPSIBLE BIN (48"X45"X34")
EXTERNAL DIMS:1140X1220X865

BIN
MATERIAL BASE : BLACK PP
MATERIAL PANELS : GREY HDPE
MATERIAL LID : BLACK HDPE
BIN MASS : 70KG
LID MASS : 11.5KG

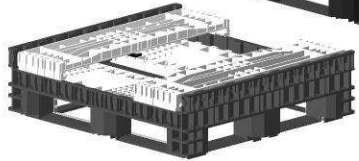


STANDARD COLLAPSIBLE BIN COLLAPSED

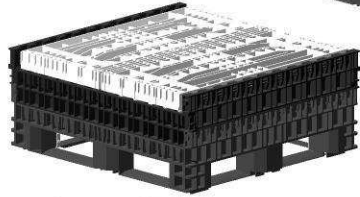


25" COLLAPSIBLE BIN (48"X45"X25")
EXTERNAL DIMS:1140X1220X635

BIN
MATERIAL BASE : BLACK PP
MATERIAL PANELS : GREY HDPE
MATERIAL LID : BLACK HDPE
BIN MASS : 69KG
LID MASS : 11.5KG



25" COLLAPSIBLE BIN COLLAPSED



STANDARD COLLAPSIBLE BIN WITH 7" EXTENSION COLLAPSED

STANDARD COLLAPSIBLE BIN WITH 7" EXTENSION (48"X45"X41")
EXTERNAL DIMS:1140X1220X1042

BIN
MATERIAL BASE : BLACK PP
MATERIAL EXTENSIONS : BLACK PP
MATERIAL PANELS : GREY HDPE
MATERIAL LID : BLACK HDPE
BIN MASS : 82KG
LID MASS : 11.5KG

EXTENSIONS
SIZE : 7 INCH



Level	Description	Zone	By	Date
O	Initial Release	-	DJJ	02.03.06
A	Utilization	G-6	DJJ	24.03.06
B	Utilization Removed	G-6	DJJ	10.05.06
C	SIZING TERMINOLOGY UPDATED	ALL	CSB	08-09-06

Collapsible Bin

Disposable packaging is becoming a highly controversial topic in everyday product costing. The new collapsible bin from Kaymac Structural Foam allows for the reuse of packaging and thus saves costs. The unit is fully collapsible for easy and more cost effective return trips.

The bin is stackable thus saving on warehouse space. The addition of a drop door allows for access to bottom bins when bins are stacked on top of each other.

Units are available with solid sides and one or two drop door derivatives, a 7 and 10 inch bin depth extension is also available.

The easy operation of the bin allows for one operator handling. The four way entry allows for use with most pallet jacks and fork-lifts.

The footprint of the bin nests accurately with the top of the bin allowing very stable stacking.

The polymer is FDA approved and ventilation slots make it compatible with all industries. A vac formed top cap allows the unit to be closed when necessary.

A minimum amount of working parts and the use of strong nylon hinge components allow for easy maintenance where necessary.



Kaymac Structural Foam
This drawing and the copyright therein is the property of Kaymac Structural Foam. It must not be copied or disclosed to a third party without their written consent

Bin Type	Drawing no.	External Dimensions			Collapsed Dimensions			Internal Dimensions		
		L	w	H	L	w	H	L	W	H
A STANDARD BIN 34" HIGH	CMO209-2	1220	1140	865	1220	1140	330	1125	1045	720
B SMALL BIN 25" HIGH	CMO209-3	1220	1140	635	1220	1140	330	1125	1045	490
C Std. Bin with drop doors	CMO209-4	1220	1140	865	1220	1140	330	1125	1045	720
D 1 x 7inch extension	CMO209-5	1220	1140	1042	1220	1140	515	1125	1045	897
2 x 7inch extension		1220	1140	1220	1220	1140	870	1125	1045	1075
3 x 7inch extension		1220	1140	1398	1220	1140	1048	1125	1045	1253
E 1 x 10inch extension	CMO209-6	1220	1140	1119	1220	1140	590	1125	1045	974
2 x 10inch extension		1220	1140	1373	1220	1140	844	1125	1045	1240
3 x 10inch extension		1220	1140	1627	1220	1140	1352	1125	1045	1482

Capacity (L)	Containerisation			Containerisation Collapsed		
	40 foot HC	40 foot	20 foot	40 foot HC	40 foot	20 foot
0.85m ³	54	36	16	126	108	48
0.58m ³	72	54	24	126	108	48
0.85m ³	54	36	16	126	108	48
1.05m ³	36	36	16	90	72	32
1.6m ³	36	18	8	36	36	16
1.9m ³	18	18	8	36	36	16
1.15m ³	36	36	16	72	54	24
1.45m ³	18	18	8	54	36	16
1.74m ³	18	18	8	18	18	8

Drawn	D. Joubert	Bin Material	Black PP
Date	02.03.06	Panel Material	Grey HDPE
Tolerance	± 1%	Lid Material	Black HDPE
Checked	C. Brown	Bin Mass	-
Approved	-	Lid Mass	11.5kg
Dwg. Scale	Ints	Printed Scale	A4

Title Description : **COLLAPSIBLE BIN SPECIFICATIONS**

Change Level : **C** Drawing No. : **CMO 209-1**
Sheet 1 of 1